



Curtin University

2025 Domestic admissions guide

**Bachelor of Medicine,
Bachelor of Surgery**

Make tomorrow better.

IN THIS GUIDE

Medicine at Curtin	2	Application process	10
What Curtin has to offer	2	How to apply (Domestic applicants only)	10
Curtin Medical School (Medicine) Mission	2	Selection process	11
Medical registration	3	Ranking for interview.....	11
Course structure overview	3	The interview.....	11
Clinical placements	3	Interview schedule	11
Course admission criteria	4	Ranking for an offer of a place.....	11
Course essentials	4	Successful applicants	12
Target applicants.....	4	Course Delivery.....	12
Bonded medical places.....	4	Location.....	12
Who can apply.....	5	Accommodation.....	12
Entry pathways	5	Orientation	12
UCAT ANZ.....	6	Scholarships	12
Casper Test.....	6	Mandatory requirements	12
Special consideration applications.....	6	Successful applicant checklist	12
Professional behaviour requirements	6	Key dates and deadlines	13
Inherent Requirements	6		
Special entry pathways	7		
Rural entry pathway	7		
Equity entry pathway	8		
Aboriginal and Torres Strait Islander entry pathway...8			
Assess your eligibility for different entry pathways9			



Medicine at Curtin

Curtin Medical School (Medicine) offers the only direct-entry Bachelor of Medicine, Bachelor of Surgery (MBBS) in Western Australia.



What Curtin has to offer

Curtin recognises the complex issues facing the Western Australian health system, its workforce and the need for more doctors to be “generalists” in their orientation. This means we are committed to producing graduates who are better equipped to meet community needs, with primary care expertise, strong leadership skills and the ability to operate effectively in interprofessional care teams.

The overall aim of the Curtin Medical School (CMS) (Medicine) is to graduate doctors who are competent and ready to practise safely and effectively, with care and compassion for patients and their families. As a Curtin Medical School MBBS graduate, students will develop an understanding of medical and scientific knowledge; communication and clinical skills; skills as a health advocate; an awareness of ethical and professional responsibilities to patients; and strategies to cope with the challenges of medicine.

As a graduate of the course students will be well prepared to begin an internship and pursue further medical training in specialty fields.

The MBBS degree has an integrated curriculum requiring self-directed learning and draws on many disciplines to provide learning in a clinical context. From the first year of the program, CMS (Medicine) will offer clinical scenarios that provide the context for learning about the scientific foundations of medicine.

The Bachelor of Medicine, Bachelor of Surgery is accredited by the Australian Medical Council.

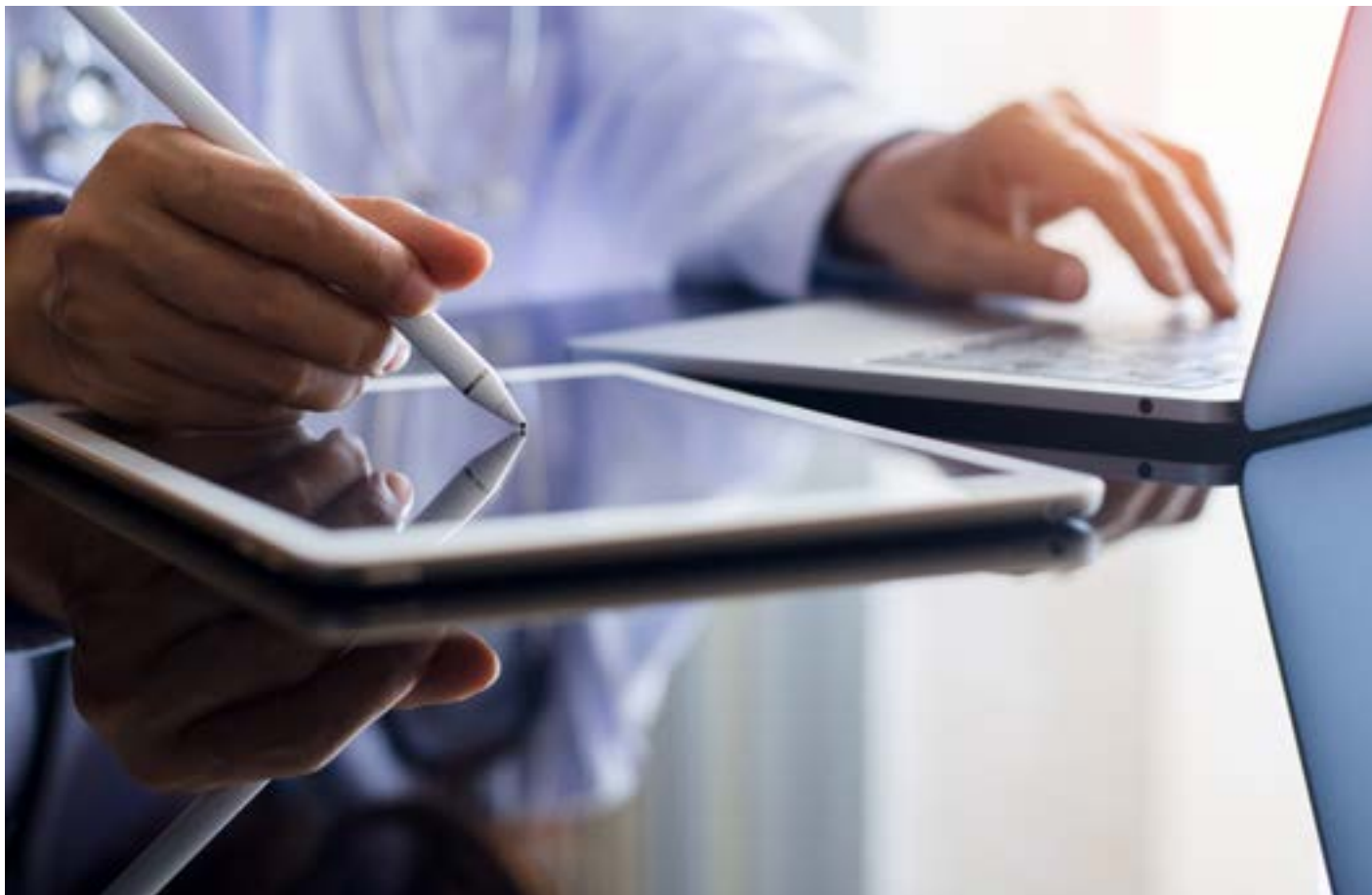
CMS (Medicine) delivers:

- A medical curriculum that emphasises primary care and prepares graduates to meet healthcare needs in Western Australia.
- Learning with other healthcare professionals and preparing for working in interprofessional teams.

- A concentration of clinical placements.
- The development of competencies in patient safety, quality of care and leadership.
- Learning about the translation of evidence into clinical practice and health improvement.

Curtin Medical School (Medicine) mission

With a strong emphasis on primary care, the mission of CMS (Medicine) is to position graduates well for rural and remote practice, as well as outer metropolitan locations, where there is a shortage of doctors.



Medical registration

All Curtin University medical students will obtain student registration with the Australian Health Practitioner Regulation Agency (Ahpra) which will be organised by the Faculty of Health Sciences for the duration of the course.

Upon completion of the medical degree, graduates are required to apply for graduate registration with Ahpra. Graduates, once registered with Ahpra, are required to undertake a 12 month internship to obtain full registration. The internship will provide supervised clinical experience in an approved hospital.

Internships are separate from the medical degree and Curtin University does not determine internship placements. Further information regarding internships can be found on the Postgraduate Medical Council of Western Australia's website.

Course structure overview

In the first year of the course, students undertake interprofessional units designed to promote collaborative practice and learning opportunities with other health sciences students. In addition, students are introduced to problem-based learning in discipline-specific units in medicine and participate in structured activities that take students into the community with a variety of health professionals.

The second and third years include intensive study of the structure and function of the human body in health and disease, using a problem-based learning approach. Students will continue to have opportunities to be exposed to a range of healthcare settings.

In the fourth year there is a transition from learning mainly on the University campus to learning in the clinical setting. Students will be offered a variety of clinical experiences including placements in outer metropolitan, rural and regional locations, in both community and hospital settings.

In the fifth and final year of study, students will work in clinical settings as members of the healthcare team. Training in the clinical settings will be in a range of different environments to prepare students for their internship.

The course is underpinned by four inter-related curriculum domains, integrated across the five years. These domains reflect the multifaceted role of the doctor:

Clinical Practitioner Domain

The clinical, procedural, and communication skills essential for clinical practice.

Professional and Leader Domain

Commitment to professional values and high-quality clinical practice, including ethics, law and working as a member of an interprofessional healthcare team; and understanding of the importance of maintaining personal wellbeing.

Health Advocate Domain

Knowledge of health systems, and the cultural, socio-economic and physical environmental factors that contribute to health and illness, disease and treatment at the population level.

Scientist and Scholar Domain

Knowledge of the biological, clinical, epidemiological, social and behavioural sciences underpinning medicine and clinical practice and evidence-based practice.

Clinical placements

Students will have the opportunity to undertake clinical placements at St John of God Midland Public Hospital, Royal Perth Hospital, Fiona Stanley Hospital, Peel Health Campus, Sir Charles Gairdner Hospital, King Edward Memorial Hospital, Perth Children's Hospital, Rockingham General Hospital as well as general practice clinics across the state and rural medical settings.

There are a number of mandatory essential requirements that must be met before students can undertake clinical placements and other fieldwork activities. Read more about these requirements on [page 12](#).



Course admission criteria

DEGREE

Bachelor of Medicine, Bachelor of Surgery

MINIMUM ATAR

95

PREREQUISITES

Chemistry ATAR or equivalent

To be eligible for admission to the MBBS course, applicants must demonstrate the mastery of key chemistry concepts, attained by approximately 220 hours of studies in Chemistry through ONE of the following pathways:

1. Completion of Chemistry ATAR with a final scaled score of 50 or higher.
2. Completion of International Baccalaureate Chemistry at HL /SL with Grade 4 or higher.
3. Completion of the NCEA Level 3 NZ course for Chemistry where a total of 24 Achieved Credit Points have been obtained.
4. Completion of TWO bachelor degree (AQF Level 7) first year Chemistry units* from Curtin or any other university (equivalent to Curtin University 25 credits each unit) with a final score of 60 or higher in both units.

Examples from Curtin University units include any of the following combinations:

CHEM1003 Introduction to Chemistry & CHEM1007 Fundamental Chemistry for Biosciences

OR

CHEM1003 Introduction to Chemistry & CHEM1001 Biological Chemistry

BRIDGING UNITS ARE NOT EQUIVALENT.

For queries regarding other equivalent subjects, please email

CMSFutureStudents@curtin.edu.au

DESIRABLE

One of any of the following Mathematics ATAR courses: Mathematics Applications, Mathematics Methods, Mathematics Specialist, or equivalent. Human Biology or Biology.

STAT

Not accepted

UCAT¹

Applicants are required to sit the UCAT ANZ

CASPER TEST¹

Applicants are required to sit the Casper Test

[acuityinsights.app](#)

INTAKE

February

STUDY MODES

Full-time

DURATION

5 years full-time

LOCATION

Perth

CURTIN ENABLING COURSE²

Not accepted

Target applicants

The degree is primarily for Western Australian school leavers who have completed year 12 or equivalent and do not have a higher degree record³; with a small number of places for Western Australian non-school leavers (including Curtin course switchers and graduates)^{5,6}. Places are also available for non-Western Australian (interstate and overseas) candidates in the school-leaver and non-school leaver entry pathways^{5,6}.

Places will be prioritised for Western Australian candidates from rural and regional areas, Aboriginal and Torres Strait Islander backgrounds and students who have experienced long-term educational disadvantage. These students will receive additional weighting in the admission process in recognition of the historic and current disadvantage experienced by people from these groups in accessing higher education.

Applicants who are interested in applying for the course but have limited access to IT facilities or the internet are encouraged to contact CMS (Medicine) directly via email at CMSFutureStudents@curtin.edu.au.

Places in the course

In 2025 approximately 110 places will be available. Places not filled in the Rural, Equity or Aboriginal and Torres Strait Islander pathways will be allocated according to CMS (Medicine)'s strategic priorities.

Bonded medical places

The Bonded Medical Program aims to provide more Australian trained doctors where there are workforce shortages, particularly in rural and remote Australia.

Approximately 28% of Commonwealth Supported Places in university medical programs across Australia are set aside for the Federal Government's Bonded Medical Program (BMP).

The scheme provides students⁴ with a Commonwealth supported medical place at an Australian university in return for their commitment to work in regional, rural and remote areas for a specified period at the completion of their training. This commitment is referred to as a Return of Service Obligation (RoSO). An area of medical need will be a district of workforce shortage as defined by the Australian Federal Government.

The Bonded Medical Program provides:

- a standard 3 year RoSO to be completed over an 18 year period
- a flexible approach in undertaking RoSO, where RoSO can be on a non-continuous basis, full-time or part-time work, and fly in/fly out work in eligible locations

Applicants should refer to official information about the Bonded Medical Program, as provided by the Australian Federal government.

Bonded Medical Places are allocated in all MBBS entry pathways.

health.gov.au/initiatives-and-programs/bonded-medical-program

ruralhealthwest.com.au/students/rurally-bonded-medical-students

Please note that the information contained in this guide is subject to change throughout the admission period. Applicants for the 2025 intake are encouraged to regularly check the following website for up-to-date information: study.curtin.edu.au/application-requirements/medicine.

1. Aboriginal and Torres Strait Islander applicants are not required to sit the UCAT ANZ or Casper Test.

2. With the exception of Indigenous Pre-Medicine and Health Sciences Enabling Course.

3. School leavers who have participated in the Innovative Schools Scholars Program (or equivalent as determined by CMS (Medicine)) in year 10 or year 11 are exempted from the requirement not to have a higher degree record.

4. Eligibility is restricted to Australian citizens and Australian permanent visa holders residing in Australia. New Zealand citizens are not eligible for a Bonded Medical Place.

5. Applicants with incomplete degrees from other institutions where they have not yet completed a degree are ineligible to apply.

6. Applicants that have been excluded from another medical school are ineligible to apply.





Who can apply

Domestic applicants for the MBBS degree must be Australian citizens, Australian permanent residents or New Zealand citizens and will fall under one of the categories defined below.

All applicants will be required to meet the MBBS specific academic standards including competency in English, Chemistry ATAR or equivalent, sit the UCAT ANZ test, and sit the Casper Test except where specified. Entry into this course is very competitive. Meeting the minimum entry requirements does not guarantee an interview or an offer in the course. All applicants must apply through TISC, except where specified.

Curtin University reserves the right to audit any applicant's residency status through the application process.

Entry pathways

School leavers

School leavers are those who have successfully completed year 12 with a Western Australian Certificate of Education (WACE) or an equivalent senior secondary qualification and have an Australian Tertiary Admission Rank (ATAR), or equivalent and have not commenced post-secondary studies (AQF Diploma or above) and do not have a higher degree record from any Australian or overseas university. School leavers who have participated in the Innovative Schools Scholars Program (or equivalent as determined by CMS (Medicine)) in year 10 or year 11 are exempted from the requirement not to have a higher degree record. Applicants are deemed to have a higher degree record if they have enrolled past a tertiary institution's census date for any given study period.

Mature age WACE applicants who want to study medicine as a school leaver are advised that they should study four ATAR courses in the one year. Applicants applying on the basis of fewer than four courses will not be considered for this course. Mature age WACE applicants must meet the school leaver criteria stipulated above. There is no upper age limit for school leavers or their year 12 qualification, provided all eligibility requirements are met.

Non-school Leavers: graduates

Non-school leavers (graduates) are applicants from any university (including Curtin University) who hold a completed tertiary degree record. Applicants who have completed multiple qualifications will have their full academic history assessed. No incomplete qualifications will be used to determine a notional ATAR. Applicants who do not hold a completed qualification or are not due to complete their current degree in the year prior to planned admission do not qualify under this pathway. The academic requirement for non-school leavers (graduates) is:

- A minimum notional ATAR of 92.

The table below provides a guide on the grade requirements for each level of completed qualification. Notional ATARs are an internal calculation only and will not be disclosed to applicants.

Qualifications	Minimum Grade
Bachelor degree	Distinction average
Graduate diploma	Credit average
Postgraduate diploma	Credit average
Master degree	Awarded/ Completed
Doctorate	Awarded/ Completed

Non-school Leavers: Curtin course switchers

A Curtin course switcher is an applicant who is enrolled in an undergraduate degree at Curtin University and does not have a tertiary record from any other Australian or overseas university or has not already completed a degree at Curtin. Applicants that have already completed a degree, will be assessed as a Non-school Leaver: Graduate. Curtin course switchers must have completed or be on track to complete a minimum of 200 credits of study in an undergraduate degree at Curtin at the end of the year preceding admission. Applicants must have a minimum of 200 credits remaining at the end of the year preceding admission. The academic requirement for Curtin course switchers is:

- A minimum course weighted average (CWA) of 80.

Applicants who have previously switched between undergraduate courses at Curtin but otherwise meet these requirements will be able to apply as Curtin course switchers. In this case, the CWA will be calculated from all units completed.

Curtin Course switchers MUST commence the MBBS program in the first year of the course but may be eligible to apply for Credit for Recognised Learning.

1. Students who have transferred from Curtin University's Optometry stream to Flinders University's Bachelor of Science (Vision Science), are not eligible to apply as Curtin course switchers. They can however, apply for the Non-school Leaver (graduate) pathway on completion of the Flinders University course.





UCAT ANZ

Applicants* are required to sit the University Clinical Aptitude Test ANZ (UCAT ANZ).

Applicants will be ranked on the basis of their total UCAT ANZ score. No adjustments or consideration will be given by Curtin University to applicants for the UCAT ANZ test, applicants will need to contact Pearson Vue directly.

Applicants that require special testing conditions or are seeking test preparation materials are encouraged to visit the UCAT ANZ website for further information.

UCAT ANZ scores are valid only for the next available admissions year. Applicants should only complete the test in the year immediately preceding their planned year of admission. Applicants re-applying for the MBBS in a subsequent year must re-sit the UCAT ANZ.

**Aboriginal and Torres Strait Islander applicants are not required to sit the UCAT ANZ.*

ucat.edu.au/

Casper Test

Applicants* are required to sit the Casper Test in the year of application. Applicants must sit the online test on one of the dates provided. Applicants will need to register with Acuity Insights to complete the test. School leavers and Curtin Course Switchers must sit the Undergraduate Casper Test. Non School Leaver (Graduates) sit the Postgraduate Casper Test.

Applicants will be ranked for interview on the basis of their Casper score in conjunction with their ATAR score and UCAT score. No adjustments or consideration will be given by Curtin University to applicants for the Casper Test, applicants will need to contact Acuity Insights directly.

Applicants that require special testing conditions or are seeking test preparation materials are encouraged to visit the Acuity Insights' website for further information.

Casper scores are valid only for the next available admissions year. Applicants should only complete the test in the year immediately preceding their planned year of admission. Applicants re-applying for the MBBS in a subsequent year must re-sit the Casper Test.

**Aboriginal and Torres Strait Islander applicants are not required to sit the Casper Test.*

acuityinsights.app

Special consideration applications

The special consideration process is administered centrally at Curtin University. CMS (Medicine) does not accept any applications for special consideration outside of the centrally approved process.

All applications and supporting documentation are to be submitted through TISC via the Educational Access Scheme (EAS) process. tisc.edu.au/static/guide/eas.tisc

For any enquiries please submit a webform on students.connect.curtin.edu.au/app/ask_general

study.curtin.edu.au/applying/special-consideration/

Professional behaviour requirements

CMS (Medicine) students are expected to meet the professional behaviour standards of a medical student, and as they proceed through the MBBS course, the standards of a medical doctor. Student progression from each academic year to the next is subject to both academic performance and professional behaviour. Enrolment in the MBBS course can be terminated if professional behaviour is not satisfactory. It is important applicants read and understand the requirements before accepting a place at CMS (Medicine). Additional information is available from the link below.

curtin.edu/med

Inherent requirements

Studying medicine places substantial demands on students. It is important applicants considering studying medicine familiarise themselves with the inherent requirements of the course, available from the link below. As part of their offer acceptance, successful applicants who receive an offer of a place will need to indicate their ability to meet the inherent requirements.

If you have questions or concern about your capability to undertake and complete a medical program due to a disability (visible or invisible), we strongly encourage you to engage with us at an early stage for advice and guidance before making an informed decision about whether to invest in the process of applying. Please email CMSfuturestudents@curtin.edu.au in the first instance with a request to meet with the MBBS Course Coordinator for a confidential discussion.

curtin.edu/med



Special entry pathways



Rural entry pathway

Eligibility criteria

Up to 25 per cent of places are allocated to Western Australian applicants from a rural background. Rural applicants are those who, as of 31 December prior to the admission year, have spent at least 10 years cumulatively or any five years consecutively in an area with a Modified Monash Model category MM 2-7 since the commencement of primary school (Year 1 onwards). The time frame is based on the location of an applicant's primary residence.

To be classified as a rural student, applicants must be Western Australian school leavers, Curtin course switchers or graduates.

Applicants who meet the Rural entry criteria will only compete for places with other eligible rural applicants. Entry via this pathway is competitive. Meeting the minimum entry requirements does not guarantee an offer for interview or a place in the course.

Adjustment schemes

Applicants eligible for a Rural place will receive up to a maximum of five additional adjustment points to their ATAR, or Notional ATAR, through CMS (Medicine)'s Rural adjustment scheme or Curtin's StepUp bonus scheme (applicable to Western Australian school-leavers only).

Rural applicants will only be eligible to receive adjustment points from one scheme.

The maximum adjusted ATAR will be 99.95, regardless of the number of points awarded or the original ATAR. This is a Curtin University process and does not alter any existing Tertiary Entrance Rank nor does it guarantee course entry.

Adjusted ATARs

Please note that any adjustment points from the CMS (Medicine)'s Rural entry adjustment scheme are only applicable for entry into the MBBS at Curtin University.

Proof of origin

Applicants will be required to submit documentation confirming their proof of rural origin, to be completed by a recognised member of their community, confirming the applicant meets the criteria for this scheme.

Suitable persons to provide confirmation of rural eligibility include any Ahpra licensed health practitioner such as: chiropractor, dentist, legal practitioner, medical practitioner, nurse, optometrist, pharmacist, physiotherapist or a person in one of the following categories: magistrate, minister of religion, school principal, Member of Parliament, police officer or veterinary surgeon.

Family members or a member of staff at Curtin University cannot complete the community confirmation declaration, even if they belong to one of the categories listed above.

How to apply

In addition to applying for the course via TISC, rural applicants must complete the Rural entry application form (link below) declaring proof of rural origin, obtain confirmation of rural eligibility from a recognised member of their community and sign that their application is "true and complete".

Applicants must submit the original form by email directly to CMS (Medicine) by the published deadline.

The application form is available at: curtin.edu/med





Equity entry pathway

Eligibility criteria

Equity entry pathway is established to widen the participation of Western Australian school leavers who have experienced long-term educational disadvantage. Equity places will be available to Western Australian school leaver applicants who qualify for the Curtin University's StepUp Bonus scheme and meet the MBBS course admissions criteria. Please refer to StepUp to Curtin webpage - curtin.edu/stepup for a list of qualifying schools for the 2025 admissions intake.

Candidates will be assessed based on the school they first attended for Year 12 where either the majority or at least four (whichever is greater) ATAR subjects were completed in the same year. Candidates will not be eligible for the StepUp Bonus when they have attended an StepUp school to redo an ATAR subject after completing Year 12 the first time.

Aboriginal and Torres Strait Islander applicants eligible for StepUp bonus, are strongly encouraged to apply for the course through the Aboriginal and Torres Strait Islander entry pathway.

Applicants who meet the Equity entry criteria will only compete for places with other eligible Equity applicants. Entry via this pathway is competitive. Meeting the minimum entry requirements does not guarantee an offer for interview or a place in the course.

Adjustment schemes

StepUp Bonus scheme adjusts eligible applicant's ATAR by five points, up to a maximum of 99.95. This is a Curtin University process and does not alter any existing Tertiary Entrance Rank nor does it guarantee course entry.

How to apply

All applicants must submit their application for the course through TISC.

All WA school leaver applicants for Medicine who are eligible for a StepUp Bonus will automatically be considered for Equity places.

Applicants will be automatically assessed for StepUp to Curtin based on school and advised of their eligibility in their Universities Admission Advice Letter (UAAL).

Applicants who are eligible for StepUp Bonus based on financial hardship, need to apply for StepUp to Curtin based on Financial Hardship. More information on the application process and deadlines for StepUp based on financial hardship is available at: curtin.edu/stepup.

WA school leaver applicants eligible for both rural entry and equity entry pathways will be considered under both entry pathways.

Aboriginal and Torres Strait Islander entry pathway

Eligibility criteria

Places will be available to students of Aboriginal and Torres Strait Islander descent. Applying directly to CMS (Medicine), applicants are not required to submit a TISC application or sit the UCAT ANZ or sit the Casper Test. Those applicants using the Indigenous Pre-Medicine and Health Sciences Enabling Course as an entry pathway are required to successfully pass all units in the course. For applicants using the school leaver pathway or other non school leaver pathways, please contact CMSfuturestudents@curtin.edu.au for advice about your application.

All applicants will be required to obtain a Confirmation of Aboriginality prior to application. It is important that applicants begin the process of obtaining their Confirmation of Aboriginality early.

Candidates must have confirmation of their Aboriginality prior to their application being considered for interview.

Find out more about the Indigenous Pre-Medicine and Health Sciences Enabling Course at: curtin.edu/bach-premed

How To apply

Applicants must submit the Aboriginal and Torres Strait Islander Entry form (link below) via email by the published deadline. This should include supporting documentation which demonstrates that they have the motivation and academic capability to succeed in the MBBS degree.

The application form is available at: curtin.edu/med

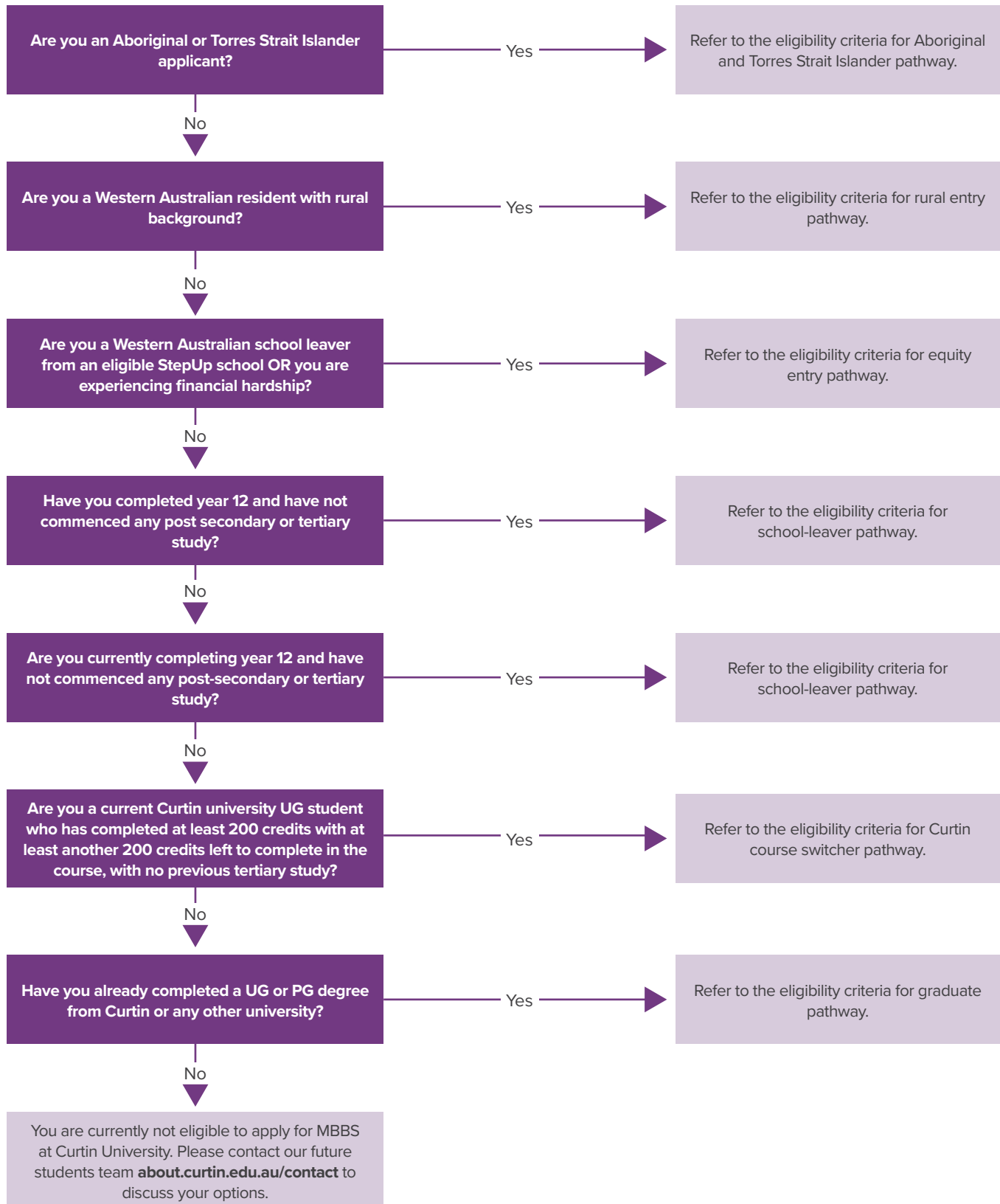
Selection process

Shortlisted applicants will be invited to attend the "Ngullar Moorditj Koorliny" the compulsory Medicine Pre-Admissions program where applicants will be assessed for key personal attributes necessary for success in the MBBS course through various engaging activities. Attending this program will also give candidates a better understanding of the learning and teaching in the MBBS course at Curtin Medical School and various support services available for Aboriginal and Torres Strait Islander medical students.

Curtin University reserves the right to audit any application documentation submitted in support of rural, equity or Aboriginal and Torres Strait Islander entry to the MBBS course.



Assess your eligibility for different entry pathways



Application process



How to apply (Domestic applicants only)

1. UCAT ANZ registration

All applicants (other than Aboriginal and Torres Strait Islanders) must register to sit the University Clinical Aptitude Test ANZ (UCAT ANZ) before the application closing date. The UCAT ANZ exam is held nationally during the months of July and August, in test centres across Australia and New Zealand as well as specified global locations.

Applicants are responsible for making their own arrangements to register for the UCAT ANZ. Please refer to the UCAT ANZ website, which explains the test in detail and sets out the procedures for registration including the fees payable, test centre procedures and regulations.

ucat.edu.au/

2. Casper Test

All applicants (other than Aboriginal and Torres Strait Islanders) must register to sit the Casper Test before the application closing date. The Casper Test is held online nationally on set dates during the months of May, June, and August and can be sat online from home.

Applicants are responsible for making their own arrangements to register for the Casper Test. Please refer to the Acuity Insights website, which explains the test in detail and sets out the procedures for registration including the fees payable, test day procedures and regulations.

acuityinsights.app

3. TISC application

All applicants (including Curtin Course Switchers and graduates) are required to apply through the Tertiary Institutions Service Centre (TISC) with the exception of those applying for the Aboriginal and Torres Strait islander pathway. Applicants are not required to specify their entry pathway on their TISC application, as this will be determined by CMS (Medicine) based on qualifications completed.

TISC receives and processes applications for undergraduate degrees on behalf of the four public universities in Western Australia. The TISC application procedure allows applicants to list up to six courses in order of preference.

Applicants are advised to ensure their contact details as supplied to TISC are current as these are the details that will be used for all correspondence, including interview invitations, where applicable. It is the applicant's responsibility to ensure these details are kept up to date at all times through the selection process.

tisc.edu.au

Change of preference

A change of preference includes changing the order of the existing preferences in the TISC application, as well as adding new preferences. This can be done by editing the application after it has been lodged on the TISC website.

*Please note: **NEW** applications or preferences for the MBBS will NOT be considered after the closing date. Changes to the order of existing preferences, including the MBBS, must be done by the published deadline.*

Subject to TISC processing schedule - refer to TISC website

4. Predicted ATAR

Curtin Medical School will obtain a candidate's Predicted ATAR from the TISC system where Year 11 results are provided. International Baccalaureate students are encouraged to upload their Year 11 reports to TISC as part of their application so that a Predicted ATAR can be calculated for the December interview round.

5. Rural/Aboriginal and Torres Strait Islander application submission

Submit any special entry application by the published deadlines, including Confirmation of Aboriginality document with seal.

For the relevant forms visit:

curtin.edu/med



Selection process

Ranking for interview

Applicants are ranked and selected for interview based on the weighted sum of their academic merit score (ATAR or equivalent) their Casper Test score, and their UCAT ANZ score (out of 3600) in the ratio of 35:35:30. Please note this course is very competitive, with limited places available. Meeting the minimum requirements does not guarantee you an offer of an interview or a place in the course.

Only shortlisted applicants will be contacted for an offer of interview. Due to the volume of applications received we are unable to provide individual application feedback. However we will endeavour to advise applicants of the outcome of their application at various stages of the selection process.

The interview

The interview process provides an opportunity for shortlisted applicants to demonstrate how they communicate, critically appraise information and think about issues important to the medical profession.

The top ranked eligible applicants from each entry pathway will be invited to attend a Multiple Mini Interview (MMI). Applicants offered an interview will be allocated a designated date and time. Interviews will only be available on dates published by CMS (Medicine). It is not possible to rearrange an interview to another date not previously published. All applicants should ensure they keep these dates free.

Interviews are primarily face to face but with limited online interviews available where required. Note that the process followed is the same, irrespective of whether the interview is face to face or online.

Attendance at an interview is mandatory in order to remain eligible for an offer of a place. Failure to appear for interview or failure to notify lack of attendance at interview in advance will mean a candidate forfeits their opportunity for interview. Attendance at an interview does not guarantee an offer of a place.

Applicants are advised to monitor the email address including junk/spam folders and phone numbers supplied to TISC as these are the details that will be used for all correspondence. It is the applicant's responsibility to ensure these details are current at all times throughout the selection process.

Selection process for Aboriginal and Torres Strait Islander applicants is explained on page 8.



Interview schedule

December round interviews

Competitive and eligible Western Australian school leavers, Curtin course switchers and Western Australian non-school leavers will be invited to attend an interview. The predicted ATAR is used for Western Australian school leavers in this round, as the actual ATARs will not yet be available.

Mid-January round interviews

Competitive and eligible non-WA graduates and those WA applicants whose Actual ATAR renders them competitive will be invited to attend an interview in this round. Actual ATARs are used for WA school leavers in this round.

Late January round interviews

Competitive and eligible non-WA (interstate and overseas) school leavers will be invited to attend an interview in this round. Actual ATARs are used for all school leavers in this round.

Ranking for an offer of a place

Applicants will be ranked for offer based on their academic merit score (actual ATAR or equivalent), their UCAT ANZ score and their interview performance in the ratio 40:20:40.

Offers will be made directly via TISC. CMS (Medicine) may make direct offers to applicants after the TISC rounds until all places are filled.

Please note: personal statements, testimonials, character/school/ work references, awards and certificates do not make up any of the selection components and will not be considered. Applicants are asked not to submit these documents to the University.

Deferral requests

Deferral requests following an offer of a place in the MBBS course will only be considered in exceptional and unforeseen circumstances (for example, national service).

Applicants must submit a request for deferment of a place, along with supporting documentation, within five working days of the offer to CMSFutureStudents@curtin.edu.au

Requests will be reviewed by the Dean of the Curtin Medical School (or delegate) and applicants will be advised of the outcome by email in due course.

Transfer from other medical schools

Curtin University does not accept any student transfer from another medical course into Year 1 of the Curtin MBBS program. Transfers into later years of the Curtin MBBS program are subject to availability of places, curriculum equivalence, and the student's good standing and progress at their current university. Students considered for transfer will be evaluated on individual circumstances and academic. Students applying to transfer into the Curtin MBBS program must accept that Curtin University will communicate with their current university regarding the intended transfer.



Successful applicants

Course delivery

This is an on campus course and on-line study is not available. Applicants who accept a place in the course should arrive in Curtin Perth to commence compulsory Pre-Orientation in mid February.

Location

Curtin Perth is located in Bentley, a busy suburb approximately 20 minutes from the CBD by car. The academic office of CMS (Medicine) is located on the main campus in a purpose-built building close to the six other schools of the Faculty of Health Sciences.

The first three years of the course are taught at Curtin Perth, with periodic visits to clinical sites. The final years of the curriculum will be undertaken in a variety of clinical placement sites, including outer-metropolitan and rural sites.

Accommodation

Living on campus is a great way for students to get the most out of their university experience. It's convenient, safe and gives you the opportunity to make friends from all over the world.

CMS (Medicine) students are given priority at our on-campus accommodation and you may have the opportunity to live with students from your course. Our accommodation is fully furnished with electricity, gas and water included in your weekly rent. You'll be within walking distance to your classes and local amenities, and will benefit from 24 hour security and access to support services.

Due to high demand, we recommend that you apply for your accommodation when you apply to study at Curtin.

Please contact our Housing Advisory Service team directly for further information. They can also help you explore alternative accommodation options.

Please contact Housing directly to discuss available options.

curtin.edu/accommodation

Orientation

A medicine year 1 welcome and introduction program, followed by the University official orientation week will run prior to the commencement of Semester 1. Attendance is compulsory and applicants who accept a place in the course should plan around these dates accordingly.

Scholarships

Scholarships are part of Curtin's commitment to rewarding academic excellence, supporting research and enabling students from all backgrounds to realise their potential. Scholarships are more than just financial support, they can enhance your portfolio of achievements.

Each scholarship has an information page which will outline the specific eligibility criteria. The criteria may be based on:

- Academic record (merit)
- Financial hardship and/or socioeconomic background
- Citizenship
- Course, faculty or interests
- You can use the scholarship search to find scholarships that meet specific criteria.

CMS (Medicine) offers scholarships to financially assist rural students to sit the UCAT ANZ test and shortlisted rural students to attend interviews for the medicine course at the Medical School in Curtin Perth campus. Additional information is available from the link below.

scholarships.curtin.edu.au

Mandatory Requirements

All CMS (Medicine) owned units have compulsory fieldwork/clinical placements. During first year, students must complete various screenings and activities to ensure their safety and the safety of the general public are maintained during the placement. These include, but are not limited to:

- National Police Certificate
- First Aid Certificate ("Provide First Aid")
- Mental Health First Aid Certificate
- Working with Children Check (2nd year requirement)
- Hand hygiene training (online)
- Completion of stipulated health screening and immunisations (some vaccinations require multiple inoculations over a period of time so students must plan their schedule accordingly).
- MBBS Student Declaration and Agreement
- Faculty Student Confidentiality Declaration

The training cost to obtain the Mental Health First Aid Certificate is subsidised by Curtin Medical School in semester 1 (minimal residual cost). Students will be responsible for arranging their own re-certification in subsequent years of the course, in accordance with the renewal schedule as outlined in the relevant year handbook.

Failure to provide evidence of compliance with these requirements will prevent students from attending fieldwork/clinical placements and as a result they will be unable to complete course requirements.

Incidental fees are applicable for the majority of essential requirements listed above.

students.curtin.edu.au/essentials/fees/

Students will be responsible for all costs associated with mandatory requirements for fieldwork/clinical placements, including vaccination and screening costs, and mask fit testing if required.

curtin.edu/healthfieldwork

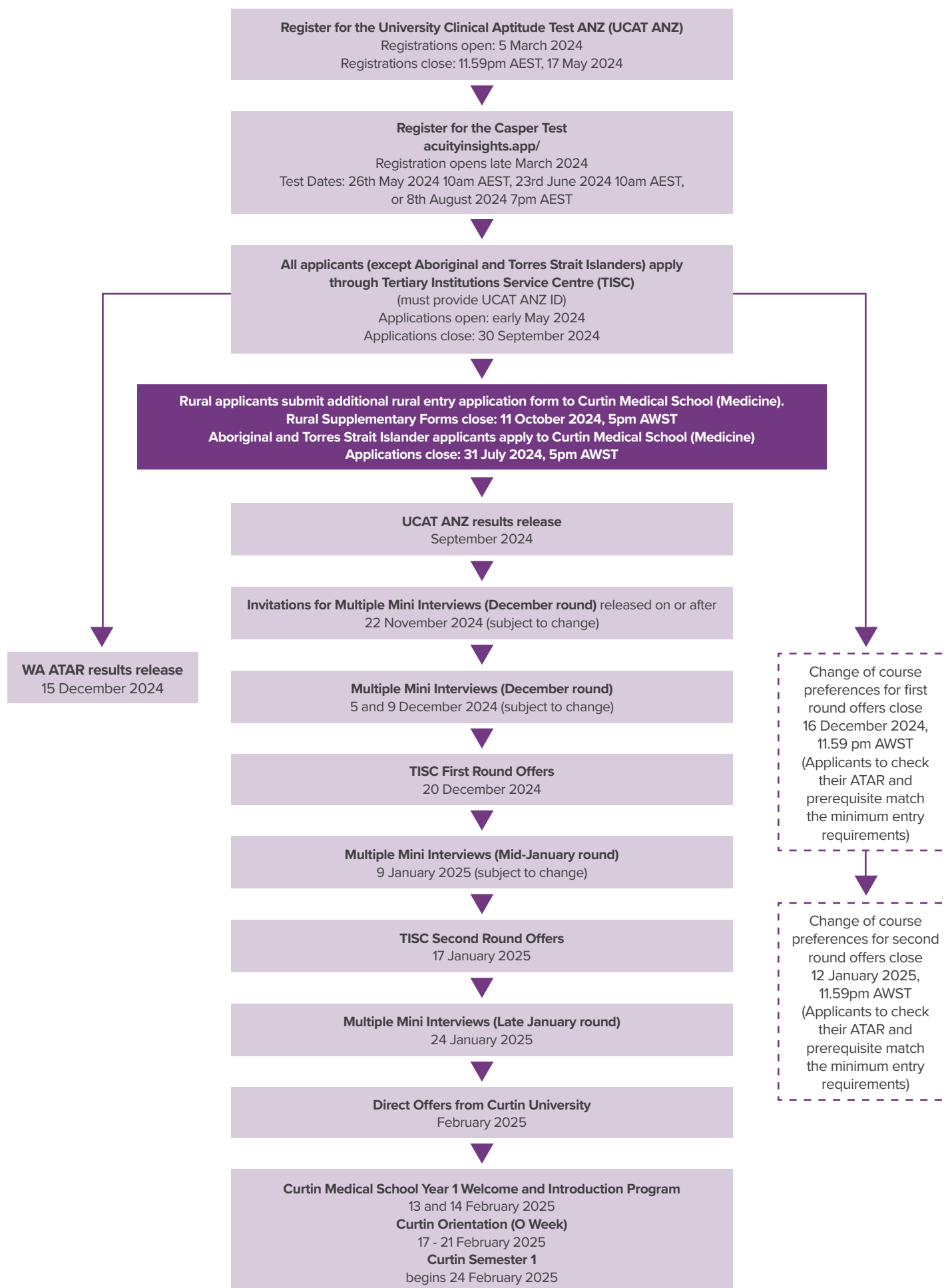
SUCCESSFUL APPLICANT CHECKLIST

- Read and understand the inherent and professional behaviour requirements of the Medicine course.
- Accept your offer.
- Complete your enrolment in Get Started!
- Start working towards attaining the various mandatory requirements, some of which are due in the third week of Semester 1.
- Arrange housing and familiarise yourself with transportation options.
- Arrange to attend the medicine year 1 welcome and introduction program and orientation week.

More information will be available in the welcome pack and the CMS (Medicine) Year 1 Student Handbook which will be emailed to you after you have accepted your offer.



Key dates and deadlines





For more information

Curtin University

Kent St, Bentley
Western Australia 6102

Postal Address

GPO Box U1987
Perth Western Australia 6845

Tel: 1300 222 888

Web: study.curtin.edu.au

Join the conversation!



facebook.com/curtinuniversity



[@curtinuniversity](https://www.instagram.com/curtinuniversity)



[@CurtinUni](https://twitter.com/CurtinUni)



youtube.com/curtinuniversity

This publication is available in alternative formats on request.

Disclaimer and copyright

This publication is for domestic applicants: Australian citizens and permanent residents, New Zealand citizens, and holders of an Australian refugee and humanitarian visa.

If you are an international applicant, visit international.curtin.edu.au or phone +61 8 9266 5888 for relevant information.

This publication is correct as at February 2024, but is subject to change. In relation to courses, Curtin University may change the content, delivery, assessment methods and tuition fees; withdraw courses or limit enrolments; and vary other arrangements, including the academic area where courses are offered. For current information relevant to this publication, visit study.curtin.edu.au.

This publication contains general information only. Readers should consider how it applies to their personal circumstances and seek specific advice. Subject to applicable law, Curtin University is not liable for anything done or not done in reliance on this publication.

© Curtin University 2024

CRICOS Provider Code 00301J 5804HS